

The Dewerstone Cottage



**The cottage is in a very
remote location
therefore to enjoy your
stay it is extremely
important you read this
booklet!!**

Please bring

- indoor shoes/slippers to wear
- Duvet or sleeping bag

A Warm Welcome from 'Spirit of Adventure' to the Dewerstone Cottage.

It is important that you read this booklet even if you are a regular visitor.

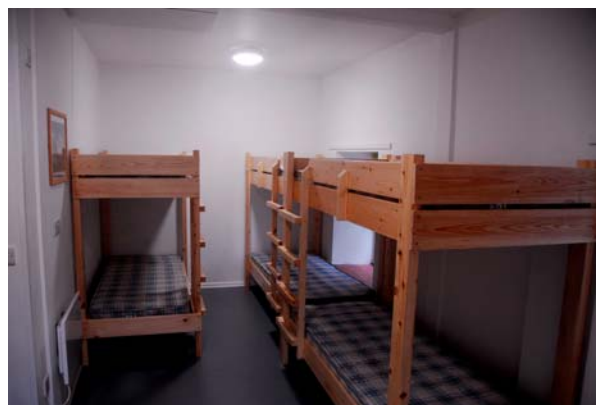
You are in a remote spot which is fantastic but you and your group need to be aware of the responsibility this entails. There may seem a lot of instructions to follow, please be patient and read them carefully then things will work and your group will have a fantastic experience here at the cottage. If you need to call us out it will take at least 45mins to get to you, so emergencies only please.

The Dewerstone Cottage is leased by 'Spirit of Adventure' a leading southwest outdoor adventure provider from the National Trust. The NT also own the surrounding woodland and open moorland, so you are free to roam and explore anywhere not fenced in. There are some great walks from the cottage and it is only a 15-minute walk to the famous Dewerstone Rocks, ideal for climbers. The small river called Blacklands outside the end door runs into the Meavy and then joins the Plym further downstream are well worth exploring.

Please observe the country code at all times and do not damage trees or plants in this wonderful natural environment.

You will find logs for the stove outside in the log store. If you find natural lighting wood, please make sure it is only dead fallen twigs - never break or cut down life wood.

The buildings and huts around the cottage all belong to and are used by Spirit of Adventure, so please do not disturb or try and enter them.



Directions to Dewerstone Cottage

! Postcode in a GPS will take you to the wrong location !

From Plymouth A38 take A386 towards Yelverton

Follow A386 - 4½ miles turn right signed Clearbrook
After ¾ mile, just over small bridge, take right turn
After ¾ mile, at bottom of steep hill turn left under stone bridge
After 200 metres cross river bridge
Dewerstone gate immediately on right after river bridge

From Yelverton A386 towards Plymouth

Follow A386 - 2½ miles turn left signed Clearbrook
After ¾ mile, just over small bridge, take right turn
After ¾ mile, at bottom of steep hill turn left under stone bridge
After 200 metres cross river bridge
Dewerstone gate immediately on right after river bridge

On Arrival at gate

You will have been given padlock combination on booking

Close behind you and relock even if others arriving !

Follow track for 500 metres and second gate

Close behind you even if others arriving !

Cottage another 200 metres

**! Please ensure both gates are kept closed at all times
! Otherwise livestock will escape !**

**DEWERSTONE COTTAGE, GOODAMEAVY, ROBOROUGH,
PLYMOUTH, PL67AP.**

Map grid reference for ROAD GATE SX529646

Map grid reference for DEWERSTONE COTTAGE SX535643

Parking at Dewerstone Cottage

**! Please ensure both gates are kept closed at all times
! Otherwise livestock will escape !**

The drive is 750 metres of rough stone track. It is passable for most vehicles which is part of the remoteness and charm of the cottage. However, please note it is not suitable for low sport cars!

You take your car at your own risk and Spirit of Adventure cannot be held responsible for any damage caused. Be aware of any small branches or rocks that may need moving from the track especially after heavy rain or high winds.

After the second gate and 75 metres before the cottage are two small parking bays on the left hand side, room for 4 cars. Outside the cottage there is room for 6 cars if carefully parked. There is a turning space at the far end of the cottage. There is no vehicle access beyond the cottage.

Please note this is open access and you must leave room for people to walk along the track at all times as in picture.



On arrival at the Dewerstone Cottage

Your will need two codes before you arrive

One for the road gate

One for the key safe

If you have not received codes please contact 'Spirit of Adventure' office before you leave home

Key Safe Instructions to find Front door key

The key safe is on the doorpost, situated on the left hand end wall of the cottage overlooking the small stream.

- You will be given the code on booking
- Enter code
- Turn knob to the right
- Open box and remove Front Door Key
- Replace box cover and press 'B' then turn knob to the left to lock
- At the end of your stay please replace key in box and relock

Safety Briefing

It is your responsibility to ensure the following points are given to your group.

- Locate where the fire extinguishers are situated
- Locate the fire alarm 'break glass' switches
- All are aware of fire alarm evacuation procedure
- Check how all the emergency escape doors work and open
- Read the disabling/resetting of the fire alarm in case of false alarm
- Emersion heater switch half way up main stairs
- Please put a clean sheet on your mattress from box provided

Please bring

- **indoor shoes/slippers to wear**
- **Duvet or sleeping bag**

Fire Procedure

If Fire Alarm sounding

- Immediately leave the building by nearest exit leave personal belongings behind
- Assemble on the track in front of the building near the Septic tank at far end
- Ring 999 and alert emergency services

Directions for Emergency Vehicles to find Dewerstone Cottage

- Go to the road gate to await Emergency Services, open gates and ensure gates reclosed without locking
- Ring emergency Spirit of Adventure numbers until you get an answer - see Spirit of Adventure contact page

If a false alarm then refer to Fire Panel reset instructions

Fire Panel disable and reset

Read carefully to reset if false alarm or someone has pressed 'break glass' point

Fire panel in front entrance above coat racks

- Open clear plastic panel - keys attached
- Refer to digital readout and wall sheet to identify fault
- Locate keyhole to the right of red buttons
- Insert key and turn to activate orange light
- Press 'silence alarm'
- If alarm 'break glass' been pressed
- Use second key to reset 'break glass' box
- Insert key in slot near top of red 'break glass' box
- Turn to retract yellow banner from window
- Main panel press 'reset' red button
- If ceiling sensor at fault
- Remove from ceiling and blow to remove any dirt or flies
- Main panel press 'reset' red button
- All well?
- Turn key until orange light goes off
- Can't reset without alarm sounding?
- Press 'silence beep'
- Call Spirit of Adventure emergency number

Emergency Contact Details for Spirit of Adventure

Mobile reception - most networks do operate outside the building and even better along the track in either direction or further up the hill behind the cottage.

Contact for 'Spirit of Adventure'

Office

01822 880277 - 0800 until 1630 Monday to Friday

Out of Office Numbers - **Emergencies** only please

John (Director)

Landline 01822 880324

Mobile 07904 595067

Martin (Office manager)

Mobile 07825 180294

Mark (Young spirit manager)

Mobile 07866 522099

Spirit of Adventure

Powder Mills

Princetown

Yelverton, Devon - PL20 6SP

Website

www.spirit-of-adventure.com

Contact email

martin@spirit-of-adventure.com

On your Departure please can you ensure the following procedure.

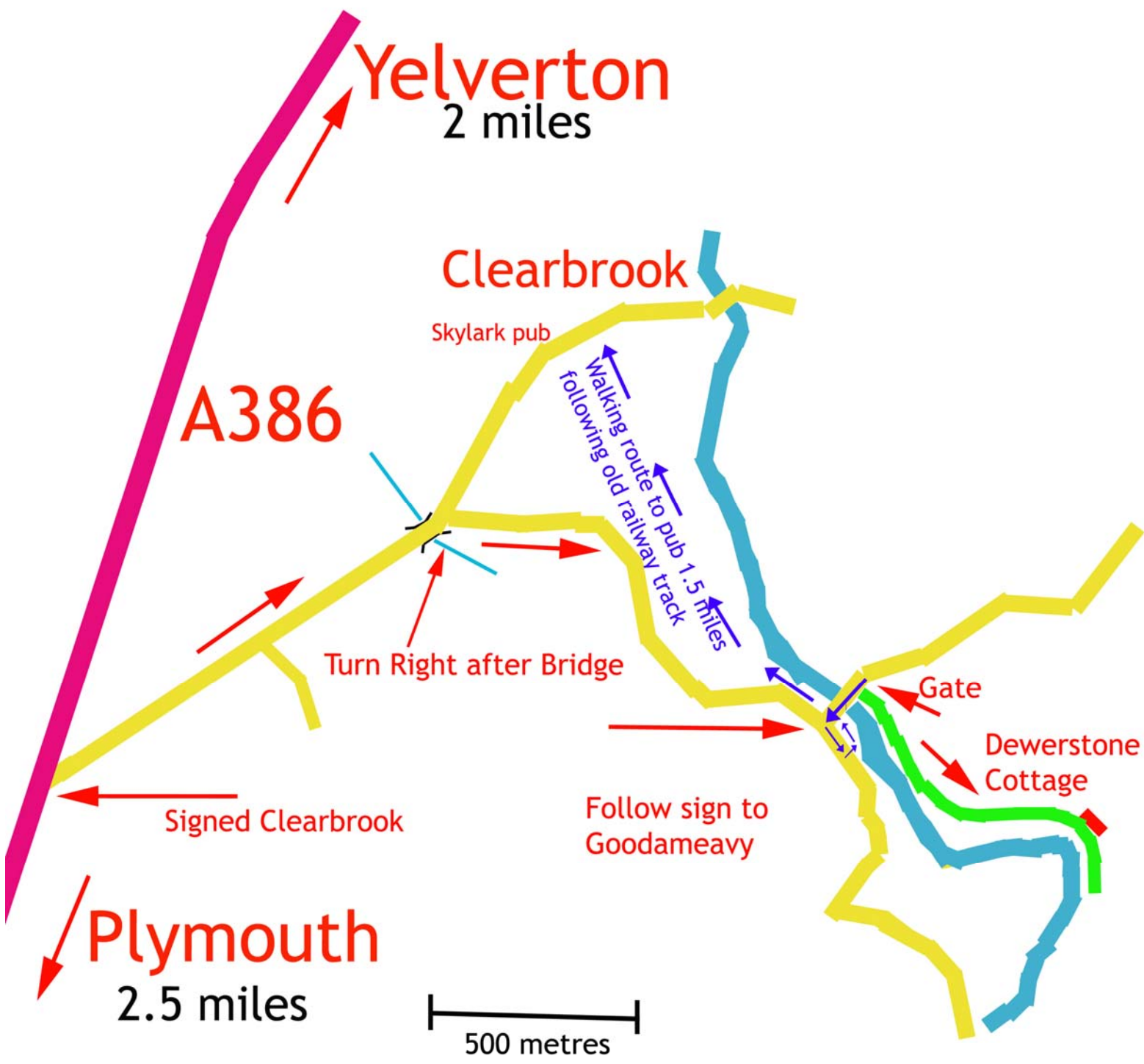
Please leave clean and tidy as you found the bunkhouse and report any breakages.

Check all the following turned off, secure and safe

- Ensure all windows closed upstairs and downstairs
- Toilets and kitchen ones easy to miss!
- Drying room dehumidifier off
- Cooker off
- Water Tea boiler off
- Immersion heater off - switch on main stairs
- Please put all dirty linen etc at bottom of main stairs
- All doors closed internal and external
- Emergency door in back bedroom easy to miss
- Wood burner is made safe, shut down if still alight
- All bags of rubbish to be placed by the front door INSIDE.
- Finally lock front door and place key in key-safe on wall

Remember finally to shut / lock gates on way out







Flood action!

In the event of a flood warning



Gather your family and leave your Tent



Report to your assembly point at

Dewerstone Cottage



Do not walk or drive through floodwater

Six inches can knock you off your feet, two feet can float your car



In an emergency call 999

Site manager: **John Diplock**
01822 880277

For flood advice phone
the Environment Agency's
Floodline **0845 988 1188***



*BT calls cost up to 2p/min plus 6p set-up fee
from your home. Other providers and mobiles
may vary.

Local Services Information

Main Hospital - emergency 999

- **Derriford Hospital**
- **Tel:** 01752 202082
- **Address:** Crownhill, Plymouth, Devon, PL6 8DH
- **Website:** <http://www.plymouthhospitals.nhs.uk>

Nearest Supermarkets

Co-op - Yelverton - PL20 6DT -Tel 01822 853372

Tesco Roborough Extra - Plymouth - PL6 7RF - Tel 0345 6779545

Surgery

Yelverton Surgery

Devon - PL20 6AS

Appointments and Out of Hours - 01822 852202

Chemist - Co-op Pharmacy Yelverton - PL20 6DT - 01822 852783

Emergency Dentist

Plymouths dental access centre 08451558070 for appointment

Petrol - nearest

Tesco's - Roborough - main road into Plymouth

Texaco - Yelverton Shopping Parade - PL20 6DT

Eats - nearest

The Dartmoor Diner - PL6 7BQ - 01752 695410

www.dartmoordiner.co.uk

The Sky Lark Inn PL20 6JD - 01822 85 3258

www.theskylarkinn.co.uk

The Royal Oak - PL20 6PJ - 01822 852944

www.royaloakinn.org.uk

The White Thorn - PL7 5HA - 01752 839245

www.white-thorn-inn.co.uk

**DEWERSTONE COTTAGE,
GOODAMEAVY,
ROBOROUGH,
PLYMOUTH,
PL67AP.**

**SX529646 Road gate
SX535643 Dewerstone Cottage**

133metres above sea level

West Devon Borough Council

**730 metres from the road gate
Height gain of 25 metres**

**800 metres from Dewerstone c/p
Via the bank of the Meavy
Height gain of 50 metres**

**1000 metres from Dewerstone c/p
Via the quarry track
Height gain 76 metres**